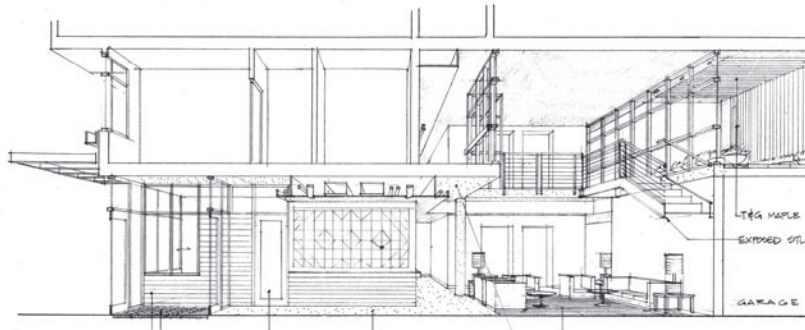


Harrison Street

AFFORDABLE SENIOR HOUSING

Located on a prominent corner in downtown Oakland, adjacent to the Oakland Housing Authority offices, these 72 one-bedroom apartments is conveniently located just three blocks from Lake Merritt, two blocks from Snow Park, and three blocks from a BART Station. Christian Church Homes teamed with the Oakland Housing Authority to commission Pyatok Architects to design this community that has achieved a 145-point GreenPoint rating. At night, the surrounding streets will be aglow from its roof-top lighthouse and recreation room, royally celebrating some of Oakland's finest retired workers with a cheerful beacon.



PROJECT DATA

- Client:** Christian Church Homes & Oakland Housing Authority
- Location:** Oakland, CA
- Completion:** 2012
- Units:** 72 units (1BR)
- Amenities:** Multipurpose lounge, computer room, social services, courtyard, laundry
- Project Area:** 67,000 sf
- Parking Ratio:** 0.25 spaces/unit
- Cost:** \$15.8 million
- Contractor:** Roberts Obayashi

